
360°Flight Simulator Manual

360° Flight simulator Operating instructions

About the power

360°Flight Simulator		
Power(v)	:	220 V
Wattage(kw)	:	6 KW
Wire requirement(mm ²)	:	6 mm ²
Switch plug(A)	:	32 A

Product introduction

360°Flight Simulator is one kind of the New and High-tech product.It's developed by Guangzhou Yunfa Hydrokinetic Machine Limited.Used to simulate Air plane driving and cross country vehicle racing.

360°Flight simulator is formed by two 360°motion axis.It has a very good experience effect for Air plane driving and cross country vehicle racing.

This product with a 1080P High Definition LCD,High performance host,sound equipment,adjustable car seat,emergency brake remote control device,Car driving rocker and Air plane driving rocker.

About operation

360°飞行模拟游戏 与 越野车驾驶模拟游戏 操作说明:

- 1、 First we need to open the LCD,turn on the Power Supply,and then turn on the PC Power Switch.,waiting the PC running;(See the picture as below)



The software will run by itself when the PC open completed,the software will show us the manual operation interface,press the red switch to reset;



- 2、 Load the card on the card reader(do not Repeated reading)When you hear “di”,we will go in the game interface;



- 3、 After we loaded the card,game will run by itself.

NOTE: Mutual switching for Flight and Racing

1. Turn the Knob button to Flight(As the picture 4);



4.Knob button

2. Secondly,press and hold the red key(reset key) for 10-13 second, the game will change to Flight.For the operation of racing is same as Flight.

★. If we using remote control,we have to reset the PC and Power.

360°flight simulator control lever manual:

In the choose map interface,Click the confirm key (ok or fire missiles) twice time,And then click the T5 key on the base.



5.360°flight simulator control lever manual

Racing game control lever manual:

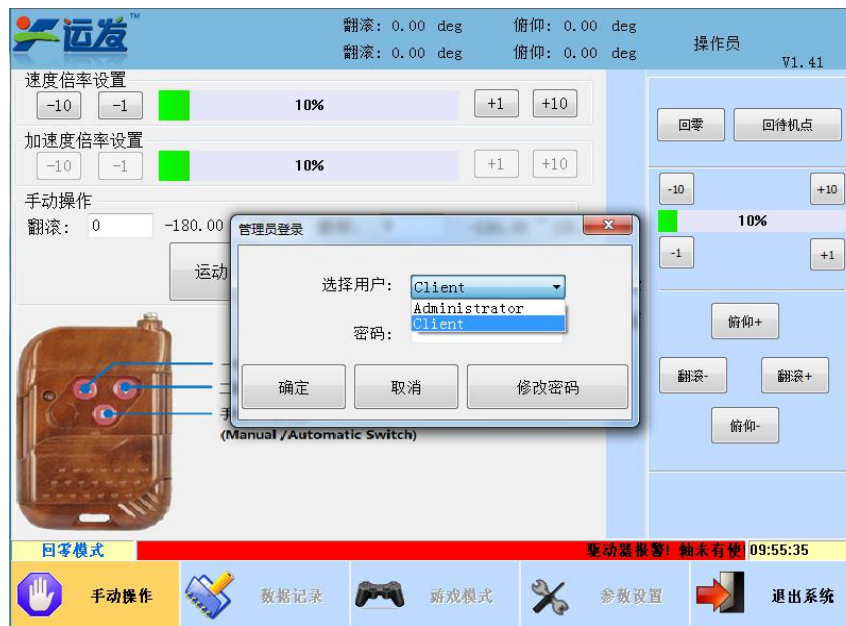
After choose the map,click the confirm key (Start game/Enter) til the game begin.



6.Racing game control lever manual

Setting the game mode:

1. Open the manual operation interface,click the”操作员”(On the top right corner),and choose the Client,inter password:123456,and confirm into the settings interface;



7.interface for sign in the administrators

2. After into the interface,as the picture 8,If you need the auto choose the map function,please click the box in the lower left;
3. Lower right box is setting the language and game duration;



8.settings interface

4. After setting,click the “save the parameter”,and confirm,and restart the PC.

Maintenance

1. Confirm the power requirement if that is accord with machine requirement;
2. Do not open the outside shell, avert being electric shock;
3. When you need to repair the machine, you have to ask the technician from manufacturer;
4. Do not put the machine outside in raining day, or somewhere is wet;
5. Do not put the machine on somewhere is too hot or direct sunlight;
6. Put the machine on the ventilated place, do not let the machine on the high temperature state;
7. Turn off the power supply when you do not use the machine, if rest for a long time, please take out the power plug;
8. Please connect the E wire.

Notice : When player come into the machine to play, do not carry anything, prevent something throw out;

Remember to lock the seat belt to play game;

Keep the safe distance between machine and onlookers;

Do not put any liquid on the machine.

以上内容由广州运发液力机械有限公司所著

本公司保留一切法律相关追究权利